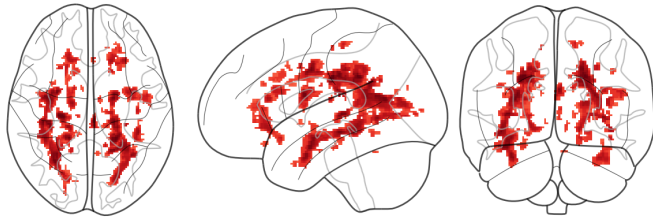


NEUROCLOND VOL

PatientID: STUDY1
Study: Multiple Sclerosis.P01 Version 1.4
Age: 0
Id: 717

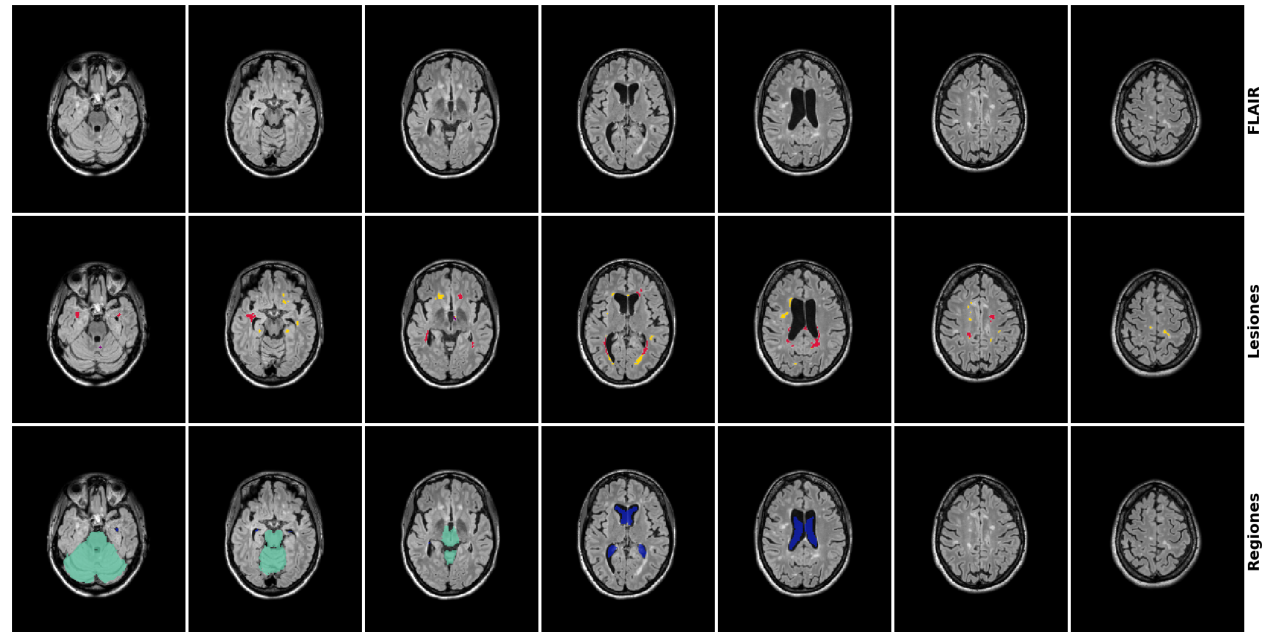
Values

Glass brain



Classification		
Region	Lesions	Volume [cm3]
Periventricular	15	5.84
Deep white matter	28	2
Infratentorial	2	0.06
Juxtacortical	0	0
Total	45	7.9

Fazekas		
Periventricular	Deep white matter	Total
2	1	3



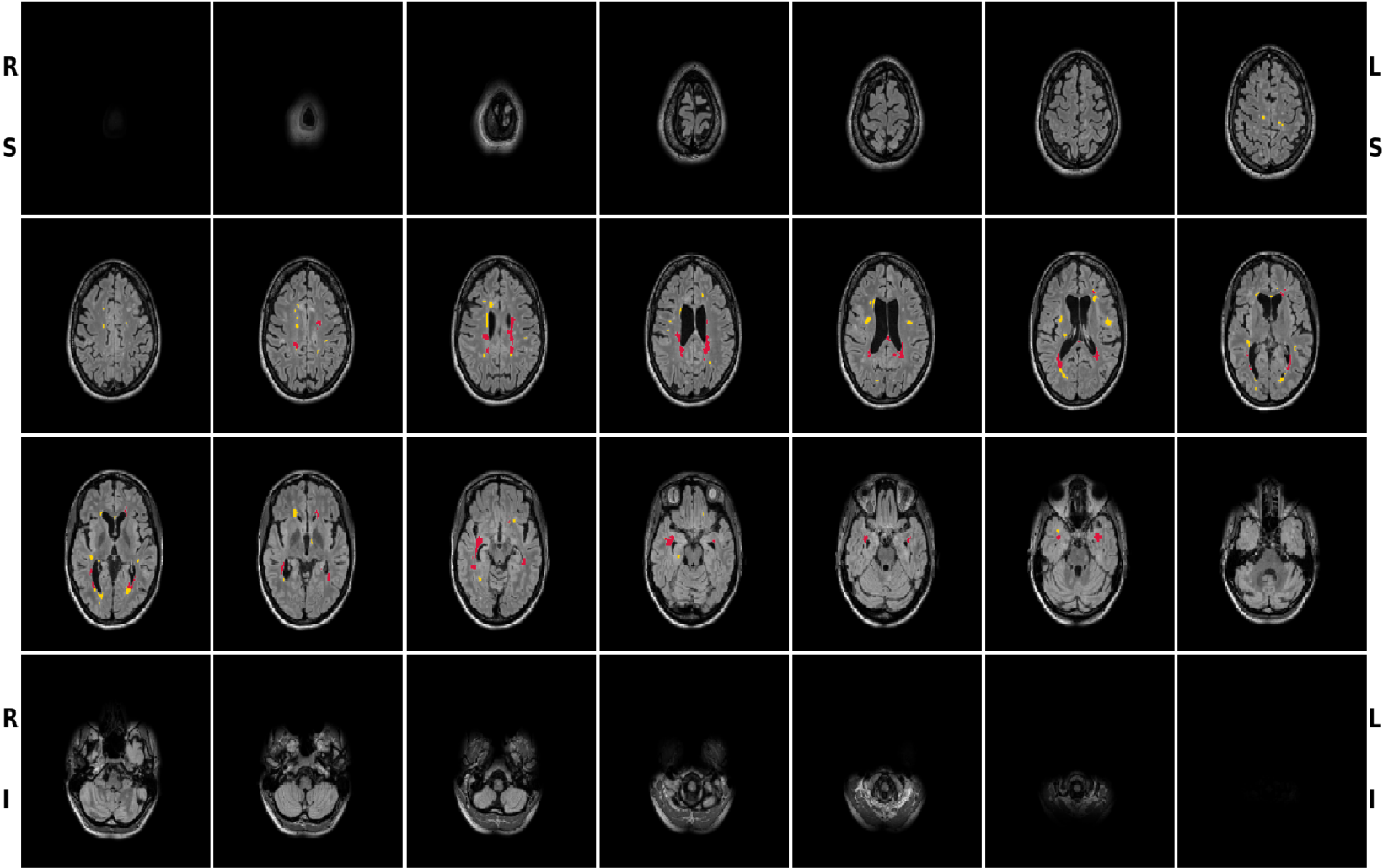
Qubiotech Health Intelligence S.L.

(+34) 981 976 470 - help@qubiotech.com - www.qubiotech.com

PatientID: STUDY1
Study: Multiple Sclerosis.P01 Version 1.4

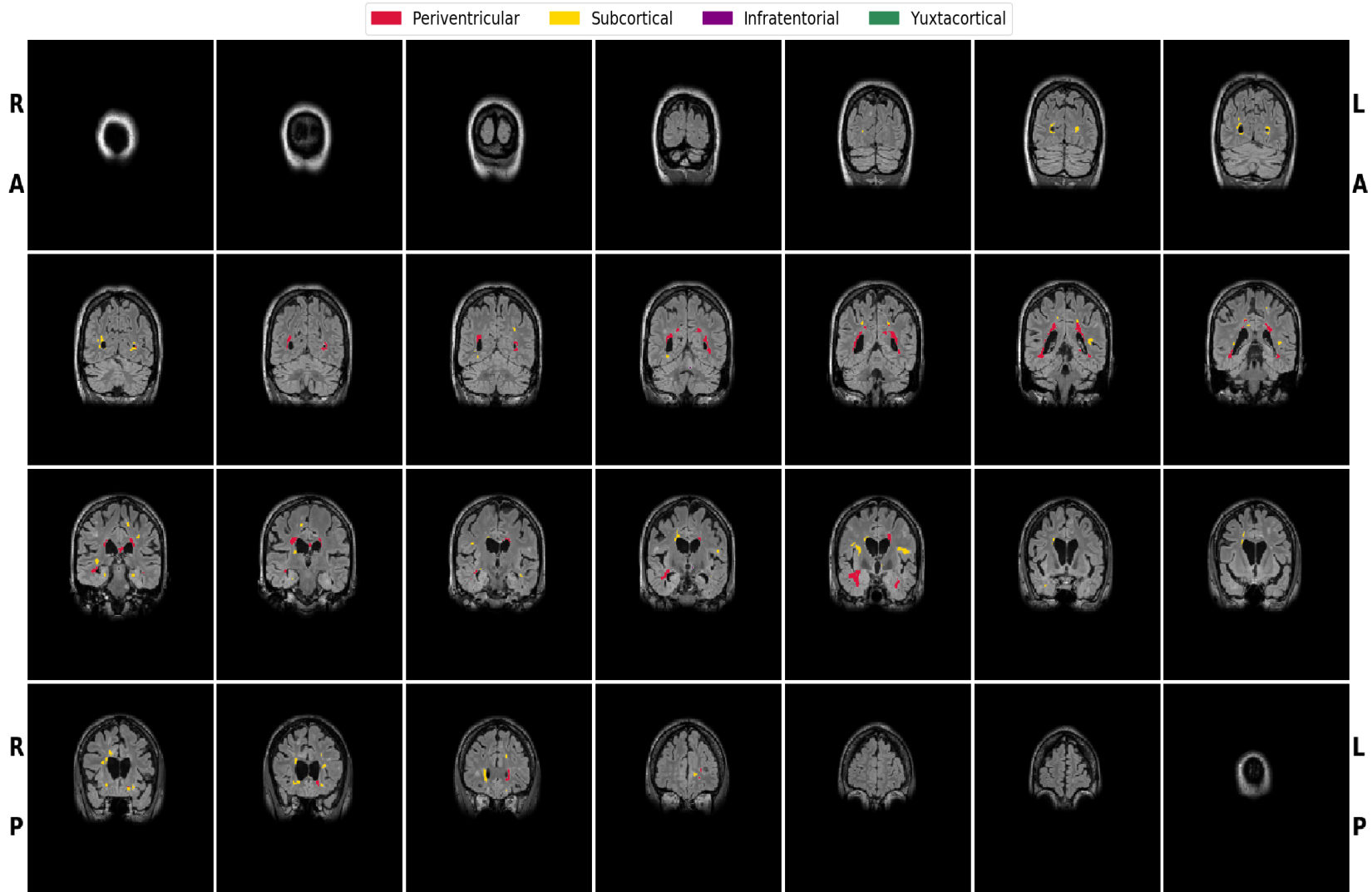
Lesions - axial

Periventricular Subcortical Infratentorial Yuxtacortical



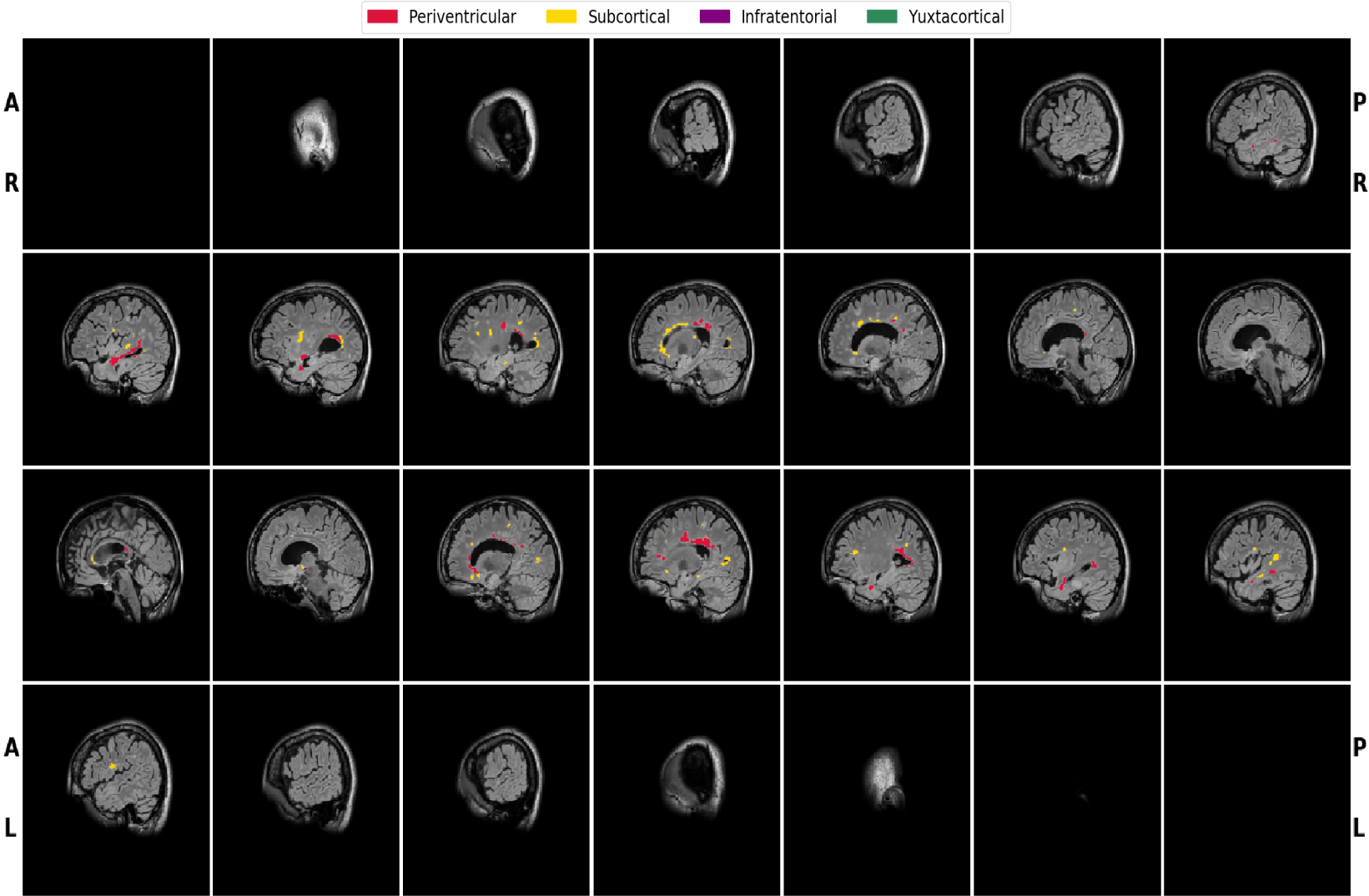
PatientID: STUDY1
Study: Multiple Sclerosis.P01 Version 1.4

Lesions - coronal



PatientID: STUDY1
Study: Multiple Sclerosis.P01 Version 1.4

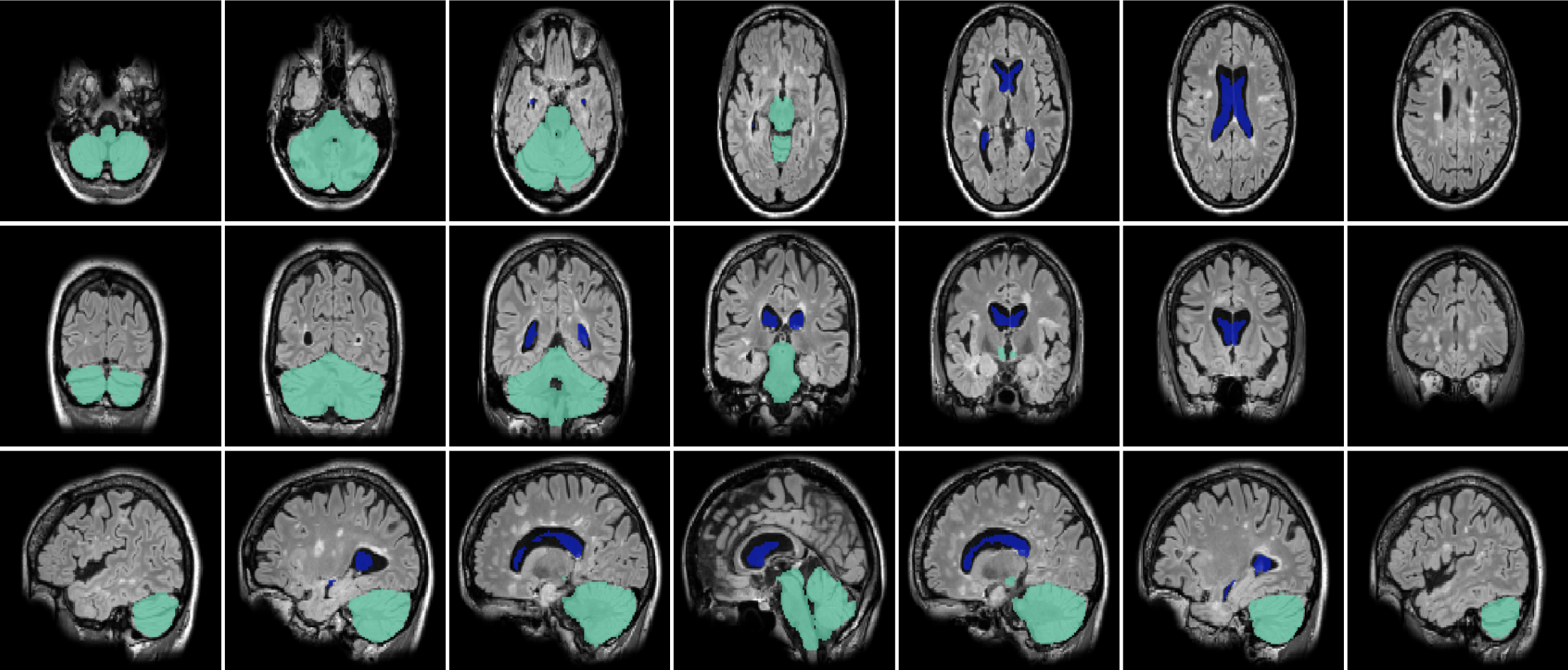
Lesions - sagittal



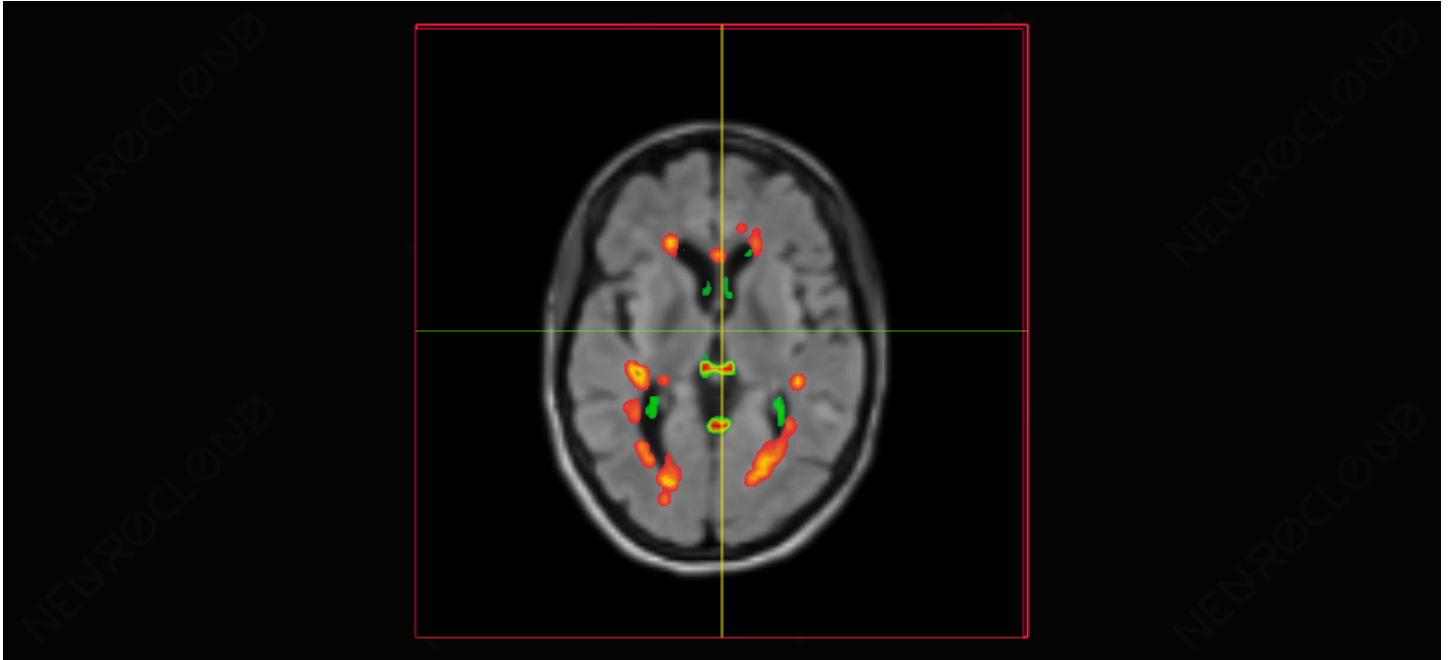
PatientID: STUDY1
Study: Multiple Sclerosis.P01 Version 1.4

Regions

Ventrículos Cerebelo



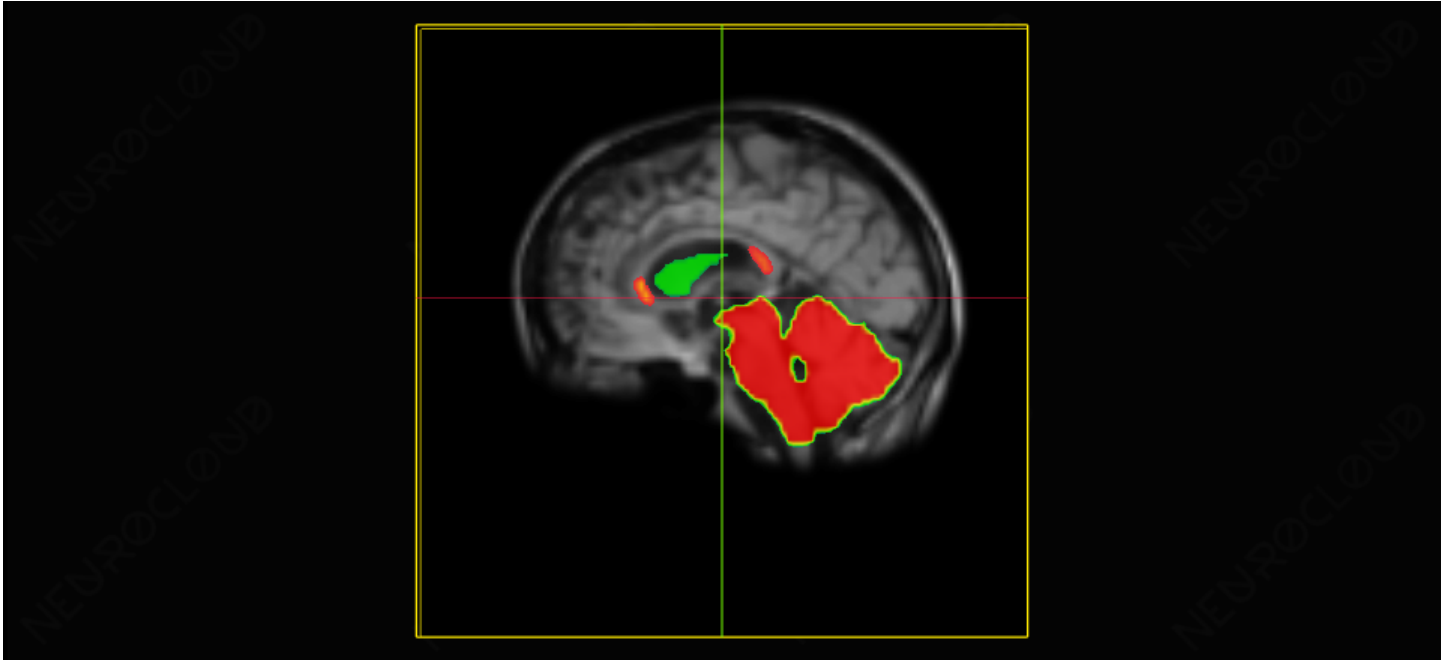
PatientID: STUDY1
Study: Multiple Sclerosis.P01 Version 1.4



Description

Viewer screenshot 1

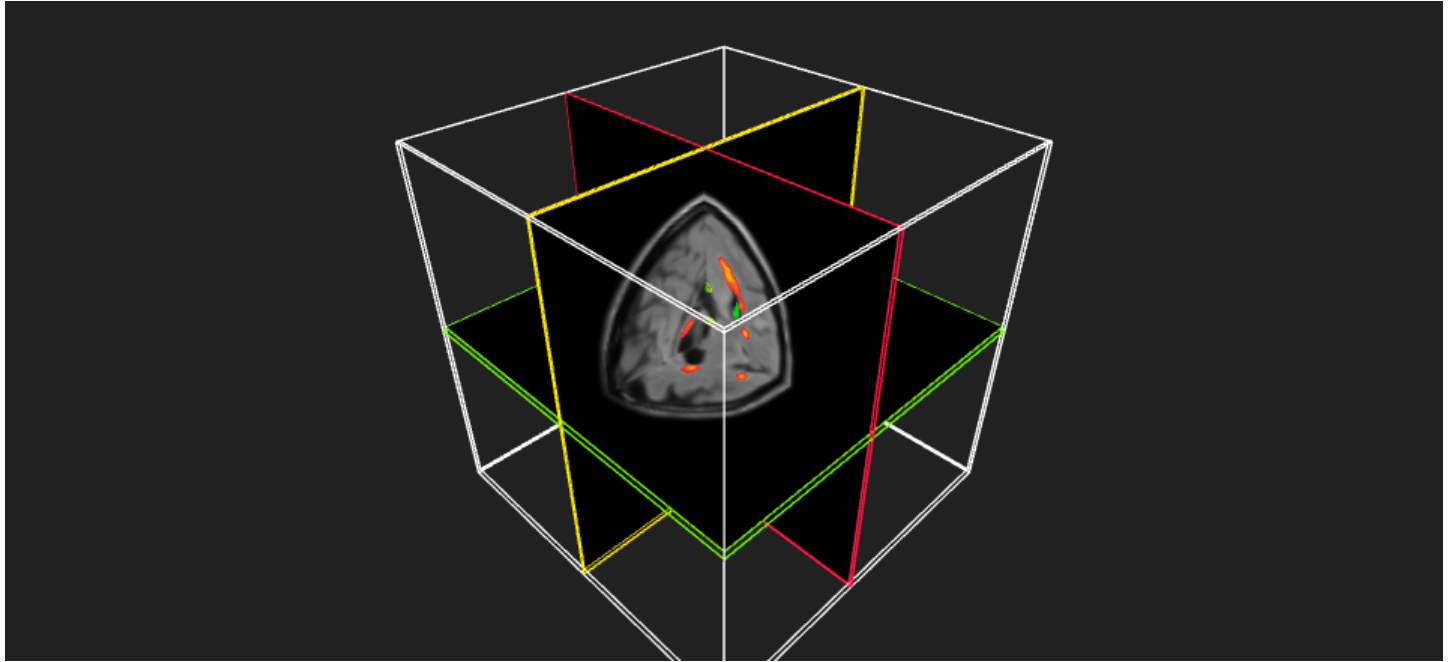
PatientID: STUDY1
Study: Multiple Sclerosis.P01 Version 1.4



Description

Viewer screenshot 2

PatientID: STUDY1
Study: Multiple Sclerosis.P01 Version 1.4



Description

Viewer screenshot 3

PatientID: STUDY1
Study: Multiple Sclerosis.P01 Version 1.4

Comment

WML sample

Disclaimer

The results provided by Neurocloud VOL are not a diagnostic report but an image quantification tool. Qubitech Health Intelligence S.L. accepts no responsibility for the use of Neurocloud VOL for uses other than those specified.

Qubitech Health Intelligence S.L.

(+34) 981 976 470 - help@qubitech.com - www.qubitech.com