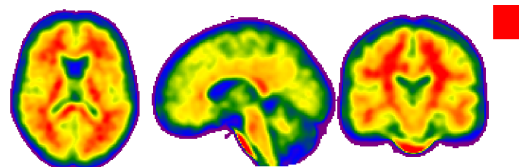


PatientID: STUDY2
 Study: Amyloid Positive (Florbetapir)
 Id: 3934

Disclaimer

The results provided by Neurocloud PET are not a diagnostic report but a tool for image quantification. Qubitech Health Intelligence S.L. accepts no responsibility for the use of Neurocloud PET for uses other than those specified.

Glass brain



Negative	Positive	Medium
----------	----------	--------

Values			
Region	Mean	Median	Total
Prefrontal	1.22	1.29	1.02
Orbitofrontal	1.17	1.24	0.21
Parietal	1.26	1.32	0.44
Cingulate	1.42	1.49	0.27
Precuneus	1.34	1.42	0.5
Temporal	1.16	1.2	0.78
Result			
SUVr	Umbral	Tracer	
1.22 +/- [0.04]	1.13	Florbetapir	

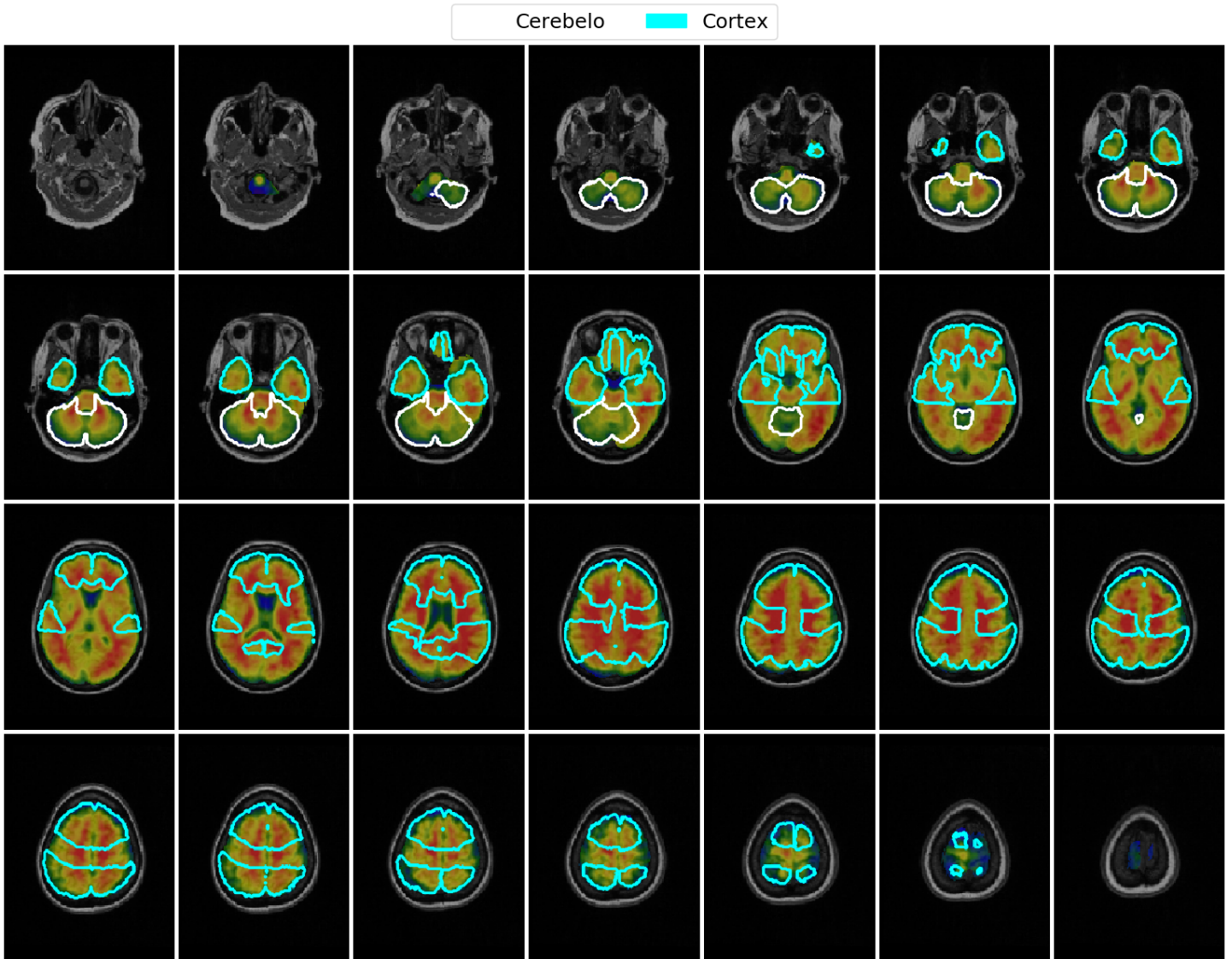
PatientID: STUDY2
Study: Amyloid Positive (Florbetapir)

Comment

Amyloid positive (florbetapir)

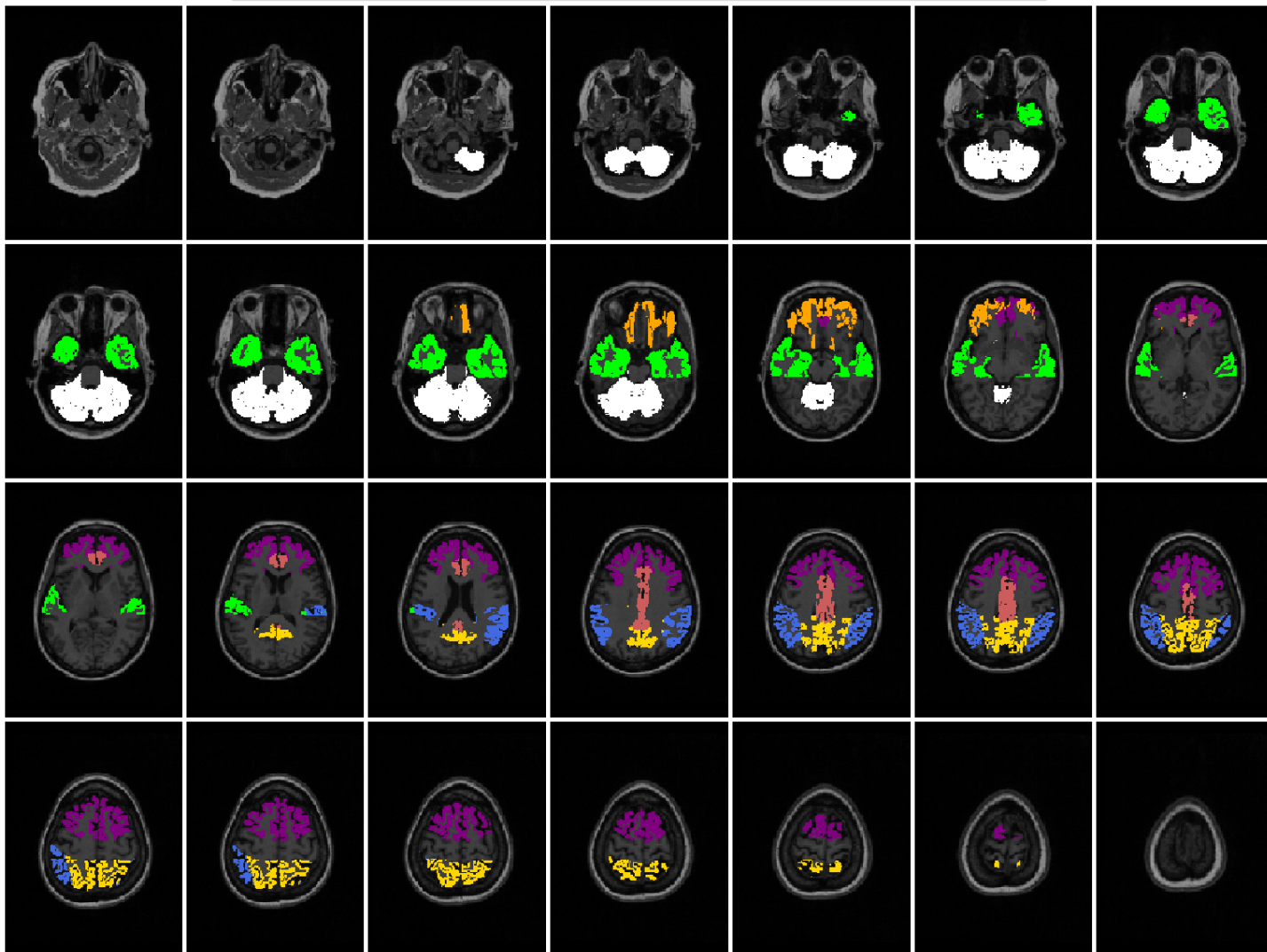
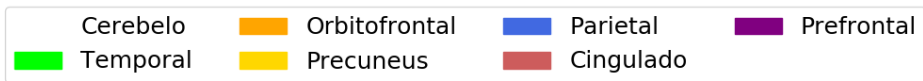
PatientID: STUDY2
Study: Amyloid Positive (Florbetapir)

Regions



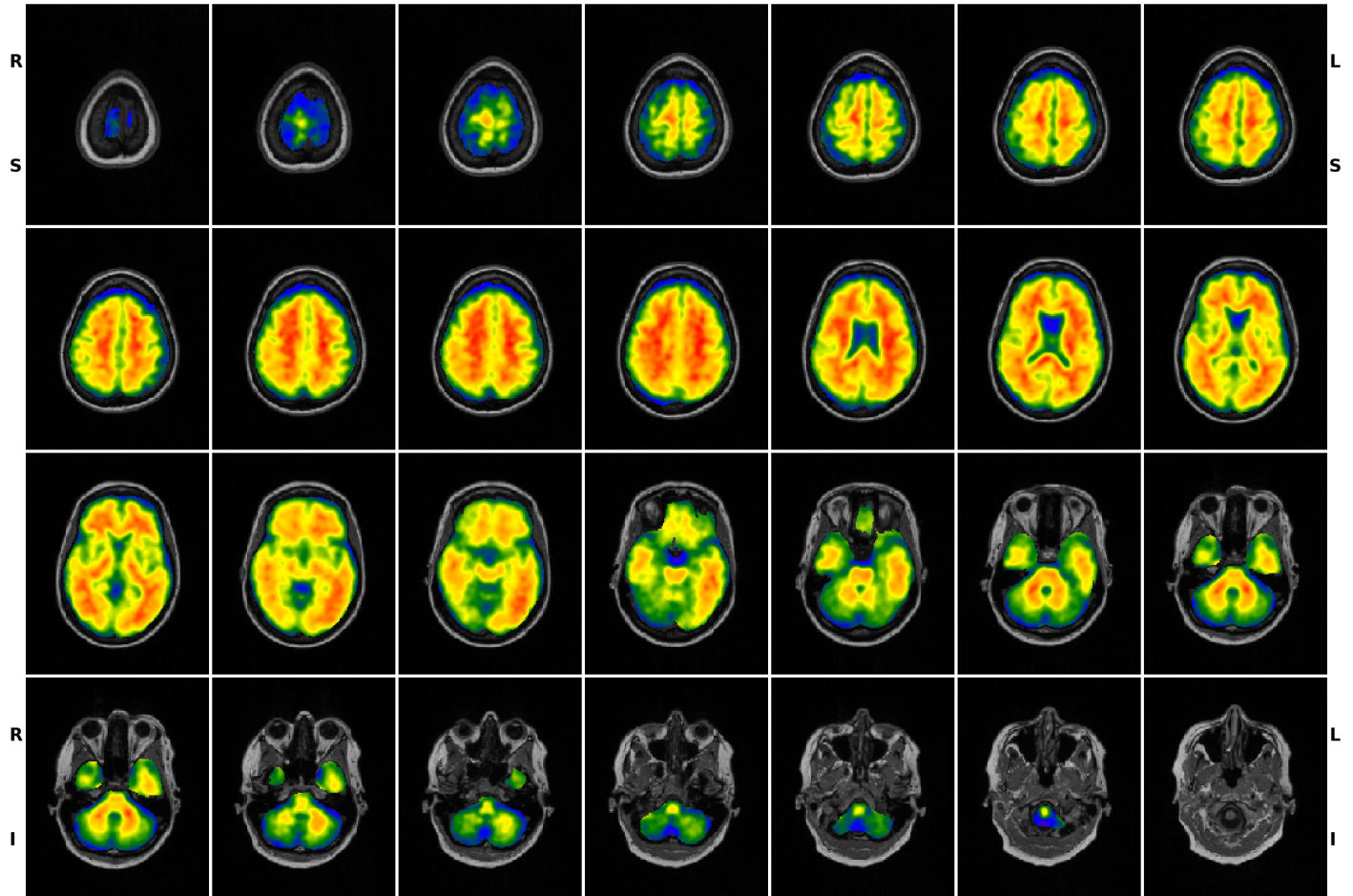
PatientID: STUDY2
 Study: Amyloid Positive (Florbetapir)

Segmentation



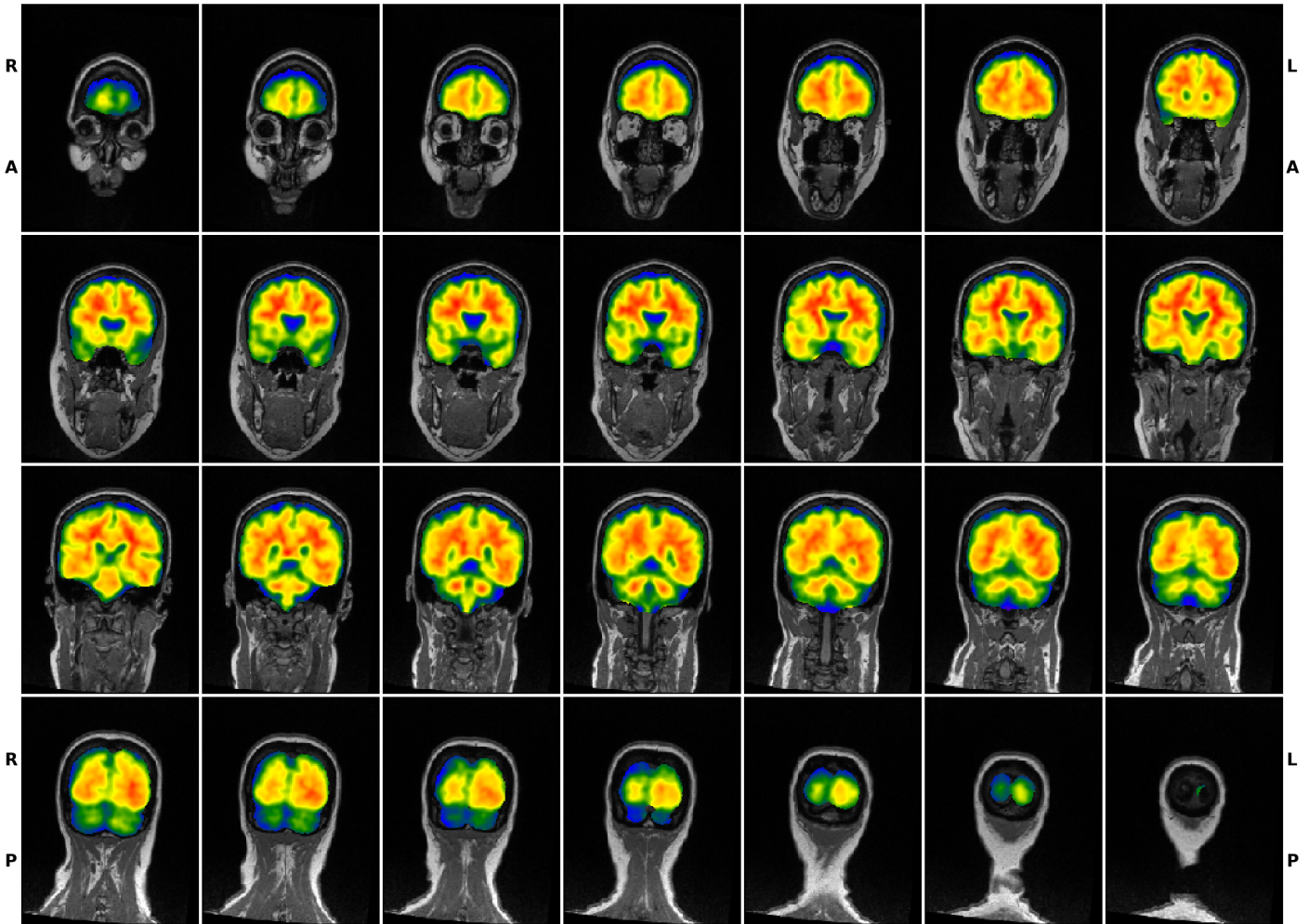
PatientID: STUDY2
Study: Amyloid Positive (Florbetapir)

Fusion - axial



PatientID: STUDY2
Study: Amyloid Positive (Florbetapir)

Fusion - coronal



PatientID: STUDY2
Study: Amyloid Positive (Florbetapir)

Fusion - sagittal

